

Progress of Japan's Disaster Management System

16 March 2006

by Satoru NISHIKAWA

Cabinet Office, Government of Japan

Cooperated with

Japan Meteorological Agency 

Outline

1. Natural Disasters in Japan
2. Disaster Management System in Japan
3. Meteorological Information Services through Collaboration with Disaster Prevention Authorities
4. Example (Typhoon Nabi 2005)
5. New Challenges in Japan

Japan has wide variety of natural disasters

- Earthquakes
- Tsunamis
- Volcanic Eruptions
- Typhoons (July – October)
- Heavy Monsoon Rains (May – July)
- Floods
- Landslides
- Snow Avalanches



Severe Damage by Series of Typhoons

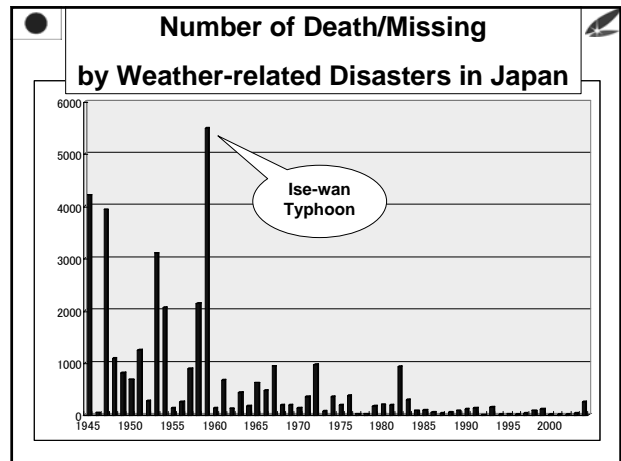
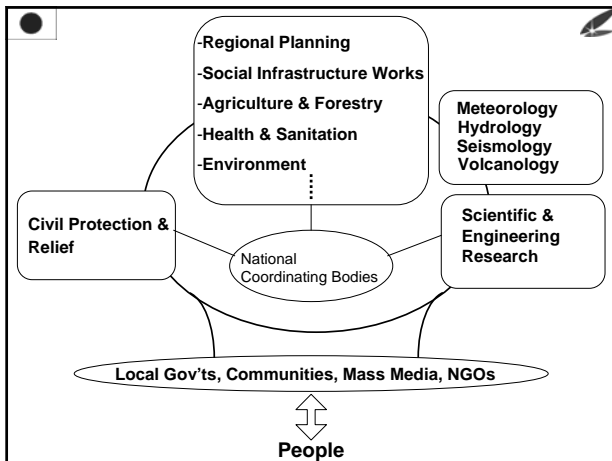
Year	Typhoon	Death Toll
1945	Makurazaki Typhoon	3,756
1947	Catherine Typhoon	1,930
1948	Ion Typhoon	838
1950	Jane Typhoon	539
1951	Ruth Typhoon	943
1954	Toyamaru Typhoon (with big ferry shipwreck)	1,761
1958	Kanogawa Typhoon	1,269
1959	Ise-wan Typhoon	5,098

1959 Ise-Wan Typhoon the 1st epoch-making turning point

- Response oriented approach
 - ↓
 - Preventive approach
- Individual approach
 - ↓
 - Comprehensive multi-sectoral approach
- Investments for disaster reduction

Disaster Countermeasures Basic Act 1961

- **Central Disaster Management Council chaired by the Prime Minister**
National Coordinating Body with all relevant Ministers & Japanese Red Cross, Public Broadcasting, Semi-Public Sectors
- **Annual Gov't Official Report on Disaster Countermeasures**
The Cabinet must officially report the disaster countermeasures to the National Diet
- **Formulation of "National Basic Disaster Management Plan for Disaster Prevention"**
The Disaster Management Operation Plan (Sectoral)
The Local Disaster Management Plan
- Designation of "Disaster Prevention Day"
Public Awareness Programs



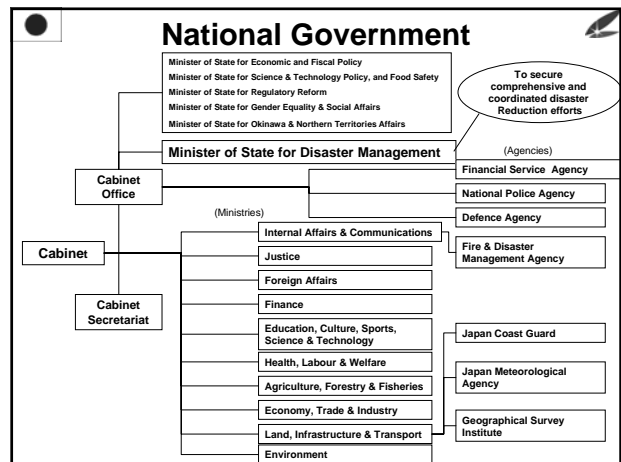
JAPAN's Government System

3 Layers of Government

National Government
(Prime Minister is elected by the National Diet)

47 Prefectural Governments
(Governor is elected by the residents)
Largest Prefecture: Tokyo 12.6 million
Smallest Prefecture: Tottori 0.6 million
(Population data based on national census in 2005)

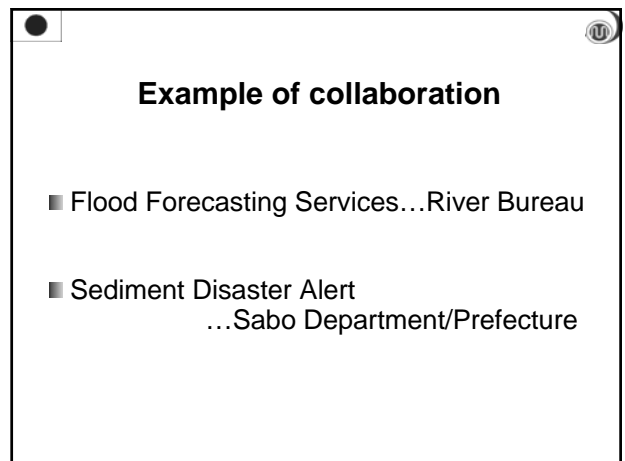
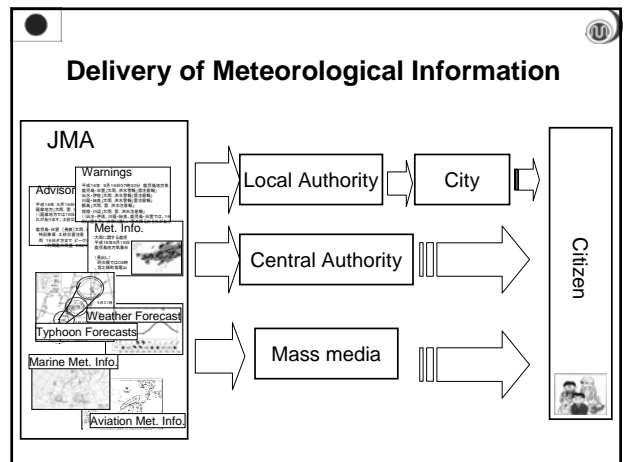
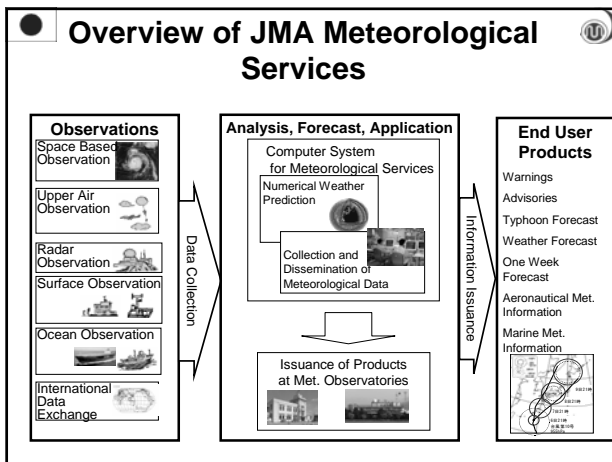
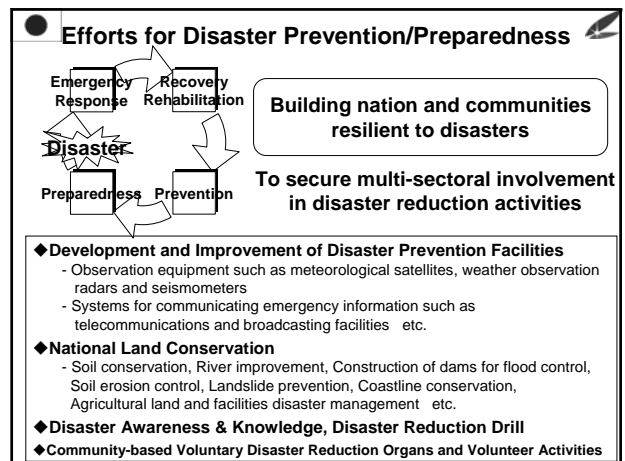
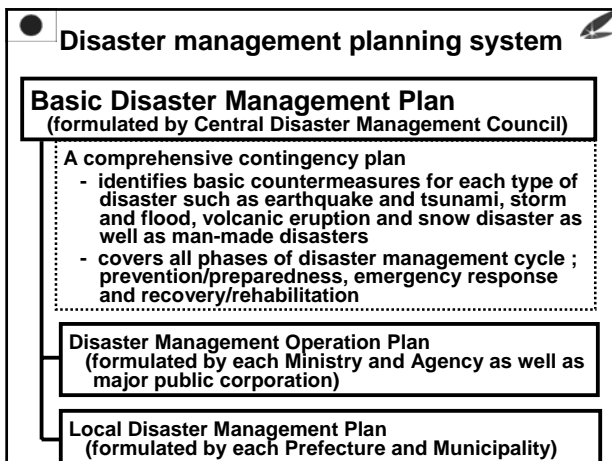
1,966 Cities, Towns, Villages Municipal Governments
(Mayor is elected by the residents) (as of March 2006)

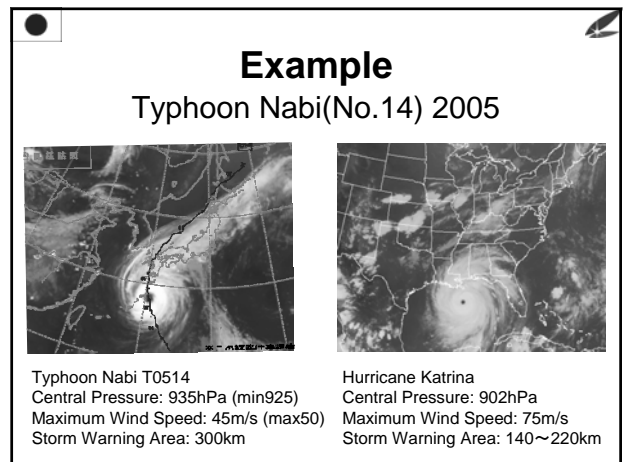
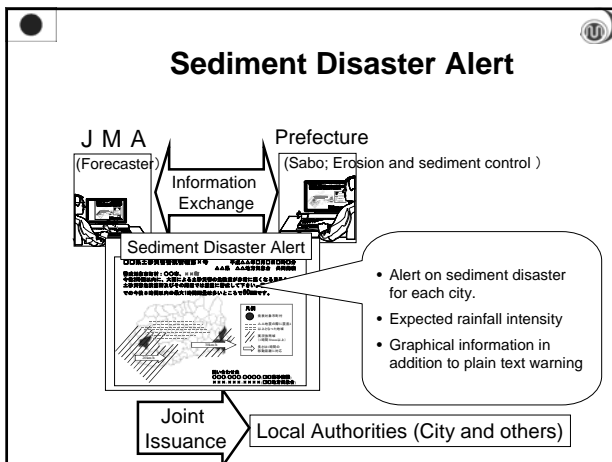
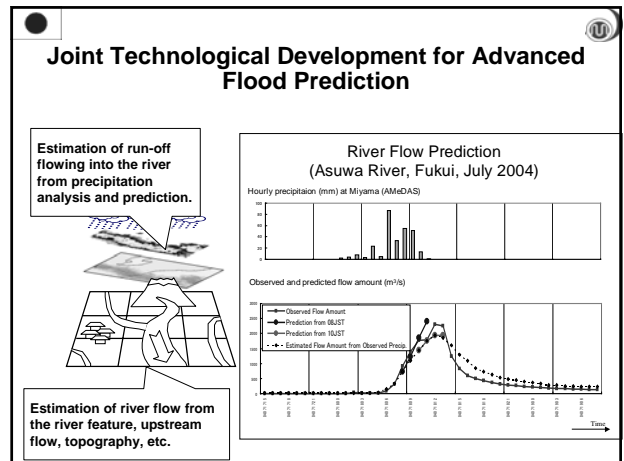
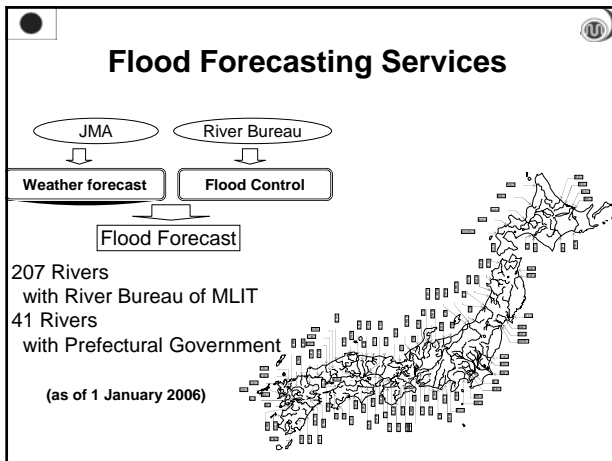


Organization of multi-sectoral coordination bodies for disaster management at national and local levels

- In prevention and preparedness phase
 - Central Disaster Management Council
 - Prefectural Disaster Management Council
 - Municipal Disaster Management Council
- In emergency response phase as well as transition to recovery and reconstruction phase
 - Individual Inter-Ministerial Headquarters for specific disaster with extreme-severity
 - On-site operations coordination centres

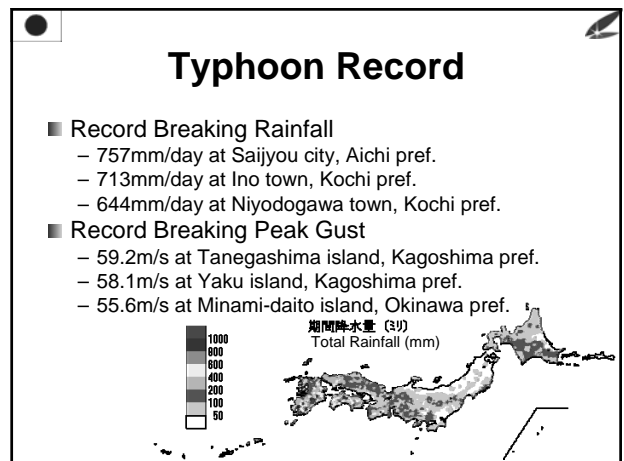






Precautions by Government

- ◆ Strong Warning by JMA
- ◆ 5 September High Level Emergency Response Team Convened Prior to Landfall
 - 5 Action Points Decided
- ◆ 5 September Call to the Public by the Chief Secretary of the Cabinet



Massive Evacuation

- 384,105 evacuees



Quick Response by Government

- 1st Government response coordination meeting - 6th Sep.
- 2nd Government response coordination meeting – 8th Sep.
- Government On-Site damage survey team headed by Minister of State for Disaster Management– 9th Sep.

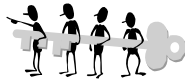


- casualties & damage to minimum
(casualties: 26 Dead, 3 Missing)



The Challenges Ahead in Japan

- How can we decrease casualties by possible Earthquakes!
 - Retrofit / Rebuild old existing houses & buildings
 - Affix furniture and adhere protective films on old windows
 - Encourage companies to make their own contingency plans etc.
- How can we decrease casualties by possible Tsunamis!
 - Distribute Tsunami Hazard Maps
 - Disseminate Tsunami Warning effectively
 - Ensure that people run immediately to safe place etc.
- How can we further decrease casualties by Typhoons & Floods!
 - Effective advance evacuation warnings for elderly & disabled
 - Distribute Flood Hazard Maps etc.



Proverb by Japanese Physics Scientist Dr. Torahiko TERADA (1878-1935)

「天災は忘れた頃にやってくる」



“Natural Disasters will hit us by the
Time people have forgotten about it”



Thank you